

SPECIFICATION

ZED 23 JH NISSAN 3.5 t

TECHNICAL DATA

- Double pantograph + telescopic boom with single extension+jib
- Sigma boom movement enabled by connecting rods
- 360° continuous turret rotation on bearing turntable
- Proportional electrohydraulic controls from basket and ground
- Engine start and stop controls from basket and ground
- Anti-slip, aluminium flatbed decking with tool tray walls
- Basket base in composite material with aluminium guardrails
- 90° right + 90° left hydraulic basket rotation
- Automatic hydraulically actioned basket levelling
- N° 4 hydraulic outriggers with ground pressure sensors and connecting rods
- Hydraulic system operated by vehicles' PTO
- Basket load sensing device
- Buzzer indicating PTO engaged
- Hour meter
- 230V AC EC electrical socket in the basket
- Standard painting: blue colour (RAL 5017) or white (RAL 9003)
- CE certified

PERFORMANCE

Working height	22,7 m
Platform height	20,7 m
Working outreach	10 m
Capacity (2 person included)	230 kg
Basket dim.	1400x700x1100 mm
GVW minimum	3,5 t



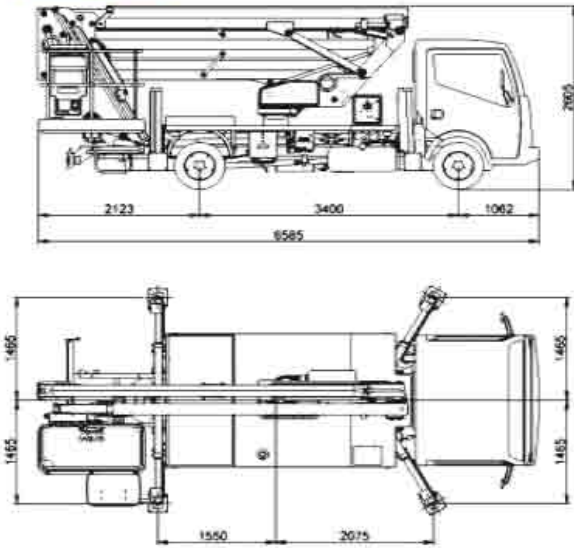
S.A.R.L. au capital de 700 000,00 DHS

I.F : 01049068 – Patente : 34206226 – RC : 15851 – C.N.S.S. : 1123778

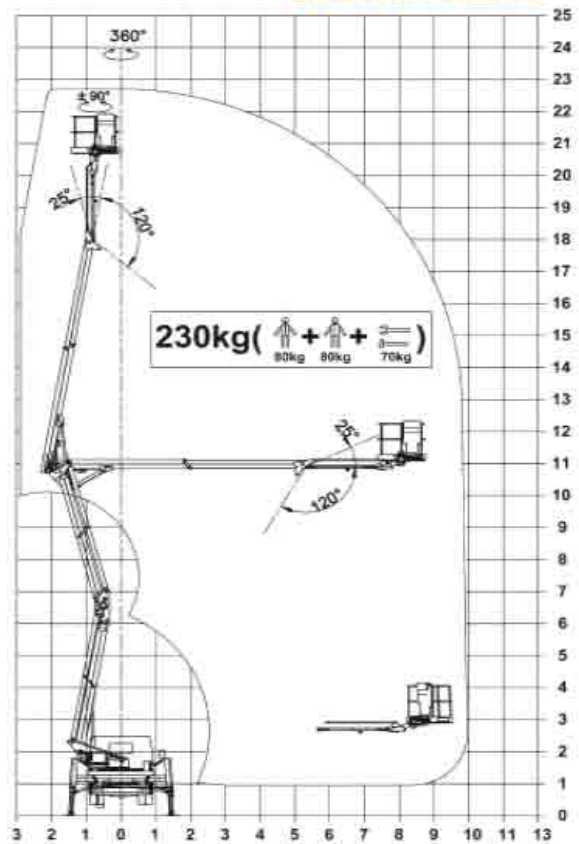
14-16 Rue de Jedda Casablanca 20 140-Maroc. Tél: +212(0)522 279 013-Fax: +212(0)522 267 594

E-mail : info@itrama.net

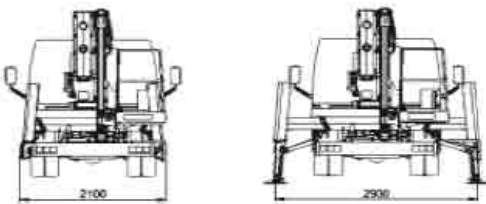
DIMENSIONS



WORKING ENVELOPE



OUTRIGGER FOOTPRINT



KEYPOINTS



S.A.R.L. au capital de 700 000,00 DHS

I.F : 01049068 – Patente : 34206226 – RC : 15851 – C.N.S.S. : 1123778

14-16 Rue de Jedda Casablanca 20 140-Maroc. Tél. : +212(0)522 279 013-Fax: +212(0)522 267 594

E-mail : info@itrama.net